

USGBC-STL

2009 Board

Elections Overview

WEBINAR

October 20, 2009

Noon – 1 pm



USGBC-STL Dynamic Governance Transition

- **“Organizational Excellence” – Strategic Plan**
- **USGBC has encouraged all Chapters to use DG**
- **Should:**
 - ✓ **Increase productivity & flexibility**
 - ✓ **Improve communication & policy-making**
 - ✓ **Improve responsiveness**



What Is Dynamic Governance?

- **An organizational management process**
- **Puts power in the group of people who interact regularly around a common aim**
- **Encourages more & equal participation**
- **Developed in the Netherlands as "sociocracy" in the 1980s**

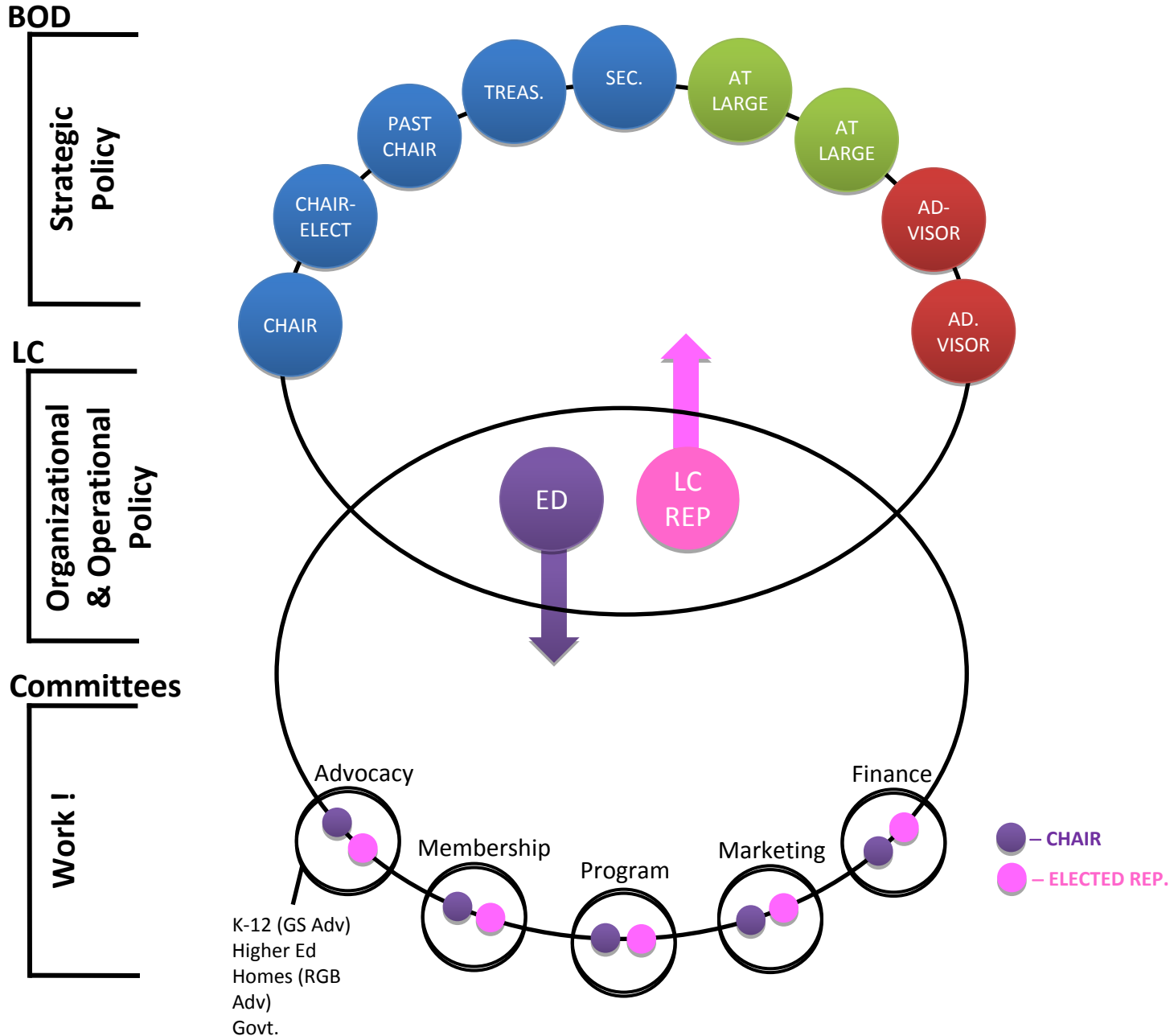


What Does This Mean for USGBC-STL?

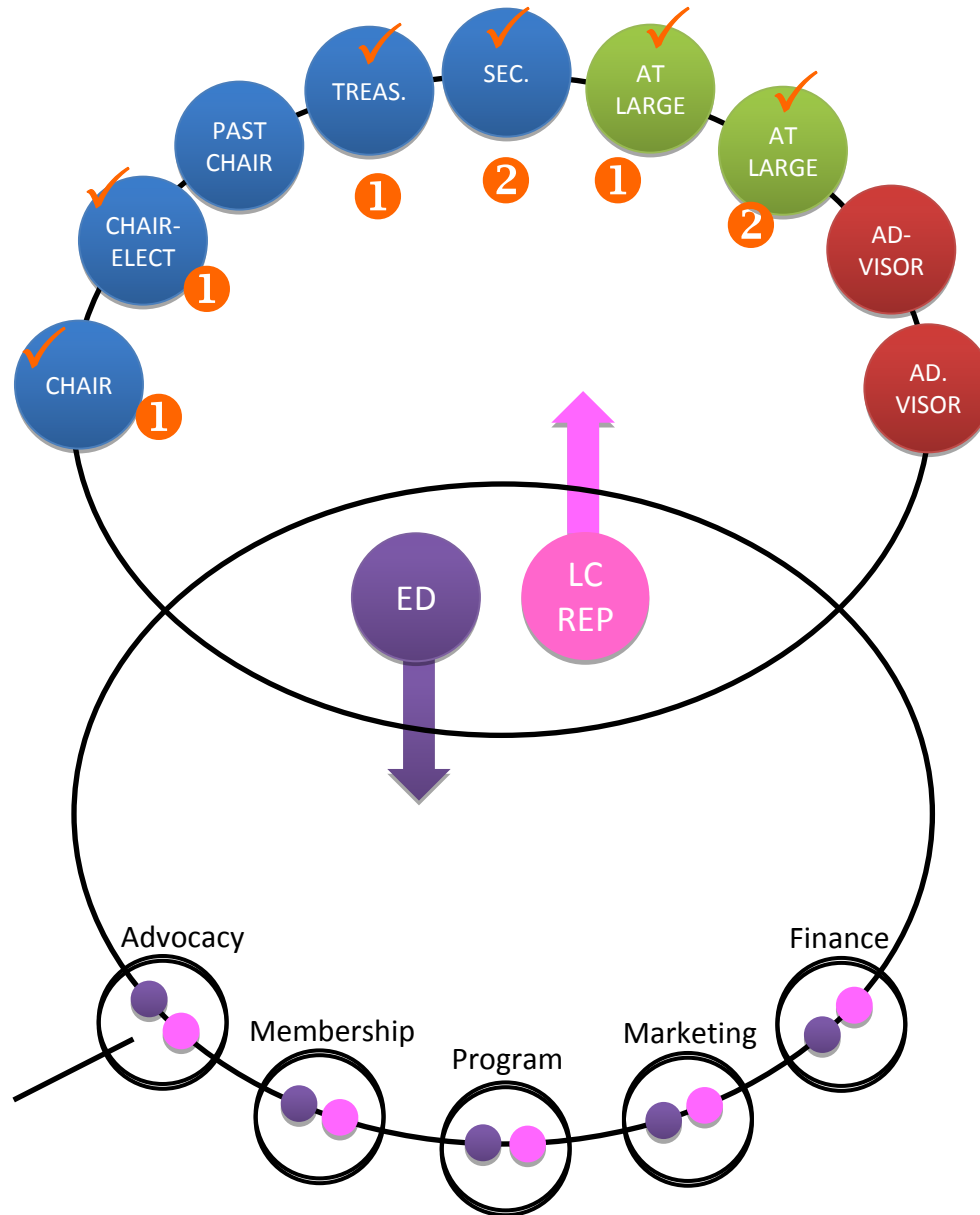
- **Board of Directors - Strategy**
- **Leadership Circle to oversee Operations**
- **Increases opportunities to plug-in**
- **Provides a clear path to leadership**



USGBC-STL Structure



2009 Election Vacancies



Non-Board Post

•We're taking nominations for the Heartland Regional Council At-Large Rep; the Board appoints that position.

Future Seats

- Add'l Advisors
- EGB
- Strategic Partners
- Branch Reps.

K-12 (GS Adv)
Higher Ed
Homes (RGB Adv)
Govt.

● – CHAIR
● – ELECTED REP.

Change in USGBC-STL Elections

Board of Directors

- In 2009, membership elects 6 at-large to BOD
- **BOD Officers - “Dynamic Elections”**- The board members will collectively identify the right candidates for the executive positions through dynamic elections.

Chair	1 year
Chair-Elect	1 year
Treasurer	1 years
Secretary	2 year
At-Large	1 year
At-Large	2 years

Position terms have been intentionally staggered to allow for continuity of board experience during transitions.



Change in USGBC-STL Elections

Leadership Circle and Committees

- **Committee chairs will no longer serve on board, but on Leadership Circle**
- **Committee chairs will no longer be elected by general membership, but will be nominated by their committee and approved by Leadership Circle**
- **Leadership Circle is chaired by Executive Director and consists of committee chairs and an additional representative from each committee**
- **Leadership Circle elects one representative to serve on the Board**



Board Position Requirements

Chair	USGBC, Chapter, and current or former Committee Member
Chair-Elect	USGBC, Chapter, and current or former Committee Member
Treasurer	Chapter and current or former Committee Member
Secretary	Chapter and current or former Committee Member
At-Large	Chapter and current or former Committee Member
At-Large	Chapter and current or former Committee Member

Note that the Board has determined that the Chapter will meet the USGBC-required ratio of representation by national member firm employees which is currently 2/3 of the Board and 3/4 of the Officers. Therefore, it is generally in the interest of the membership to elect several USGBC member firm employees to the Board.



Non-Board Position

Heartland Regional Council At-Large Rep

- **Nominations only**

- **Serves along with HRC Board Rep**
- **Two year term, up to 3 consecutive terms**
- **Board will receive nominations and make an appointment**
- **Must be a member of USGBC-STL**
- **Must report to Leadership Circle**



Nominations – Due to usgbc-stl@mobot.org by midnight on November 8

Chapter Web site: www.usgbc-stl.org



ST. LOUIS
REGIONAL
CHAPTER

Nomination Form – 2009 Board and Heartland Regional Council At-Large Rep

Deadline for Submission: November 8th, 2009

The gray areas on the Nomination Form may be filled out on your computer (they expand as you type) and emailed to usgbc-stl@mobot.org as an attachment. You may also print the form and fax it to (314) 577-0298.

Information about Nominee (Self-nominations are welcomed)

Name	
Company	
Mailing address	
E-mail address	
Phone	

Information about Person Making Nomination (optional)

Name	
Company	



Election Guidelines

Chapter Web site: www.usgbc-stl.org



ST. LOUIS
REGIONAL
CHAPTER

2009 Elections Guidelines

The U.S. Green Building Council – St. Louis Regional Chapter Board of Directors will be comprised of four officers – Chair, Chair-Elect, Secretary, Treasurer – plus the Past Chair, two At-Large members, two Advisors and a Executive Director. See below for the highlights of the responsibilities of each position. Note that full job descriptions are available on the Chapter Web site: www.usgbc-stl.org.

- Six general Board Members will be elected by the chapter membership.
- The Board will identify from these newly elected members and the existing members the specific position assignments through **Dynamic Elections**. These positions include; terms for this 2010 election in parentheses: Chair (1 year), Chair-Elect (1 year), Secretary (1 year), Treasurer (2 years), At-Large (1 year), At-Large (2 years).
- Chapter Board members must be members in good standing with the Chapter.
- The Board may only select employees of a USGBC national member firm for the posts of Chair and Chair-Elect.
- Chapter Board members must currently serve or have previously served on a USGBC-STL committee.
- This election year is a transition year as we move to a Board of Directors that is separate



Job Descriptions

Chapter Web site: www.usgbc-stl.org



ST. LOUIS
REGIONAL
CHAPTER

Board of Director Job Descriptions

Chair (One year term)

1. Is a voting member of the Board.
2. Must be part of a USGBC member company at the time of appointment and an individual member of St. Louis Regional Chapter.
3. Serves as the Chief Volunteer of the organization.
4. Is a partner with the Executive Director in achieving the organization's mission.
5. Provides leadership to the Executive Director.
6. Chairs meetings of the Board.
7. Facilitates the Board's work.
8. Facilitates the Board's communication.
9. Serves as the primary contact for invited or special guests.
10. Discusses and approves the Chapter's budget.
11. Helps guide the Chapter's strategic plan.



ST. LOUIS
REGIONAL
CHAPTER

Heartland Regional Council Representative Job Description

1. Two representatives from each Chapter participate in the activities of the area's Regional Council. One is from the Chapter Board and holds the "leadership" position; the other holds the at-large position. The representatives' 2-year terms are staggered. Chapter representatives to the Regional Council may serve up to 6 years consecutively (up to 3 terms).
2. Representatives to the Regional Council are nominated by the Leadership Development Committee (LDC) Chair and approved by the board.
3. Regional Council Representatives must be volunteers from the Chapter membership (and not Chapter or national staff or consultants).



Elections

- Will be electronic November 17 – 25
- Voting open only to current USGBC-STL members as of November 16
- Members will receive an e-mail with a unique username and password necessary to vote.
- Check www.usgbc-stl.org for updates and details



USGBC-STL Elections

Questions?

Pat Justis, Chair

USGBC-St. Louis Regional Chapter

314-554-4301

pjustis2@ameren.com

